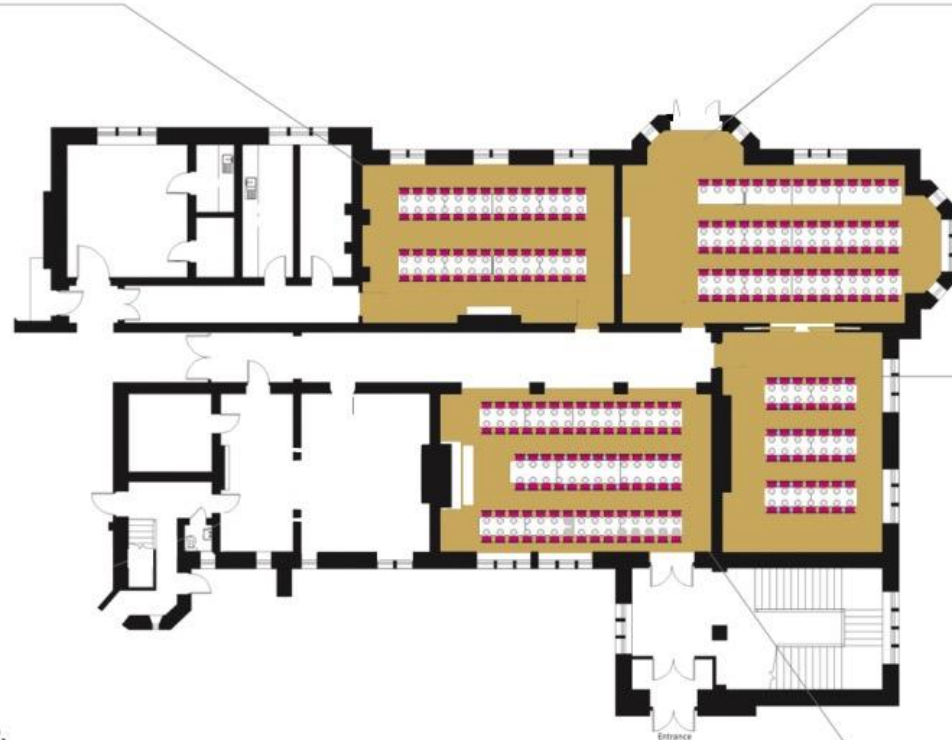


Trestle Layout
Option 1

Dining Room
9.68m x 6.05m
Max Seating: 48/56
8 of 6ft x 2ft 6"

Drawing Room
12.15m x 7.47m
Max Seating: 65/75
11 of 6ft x 2ft 6"
1 of 8ft x 2ft 6"



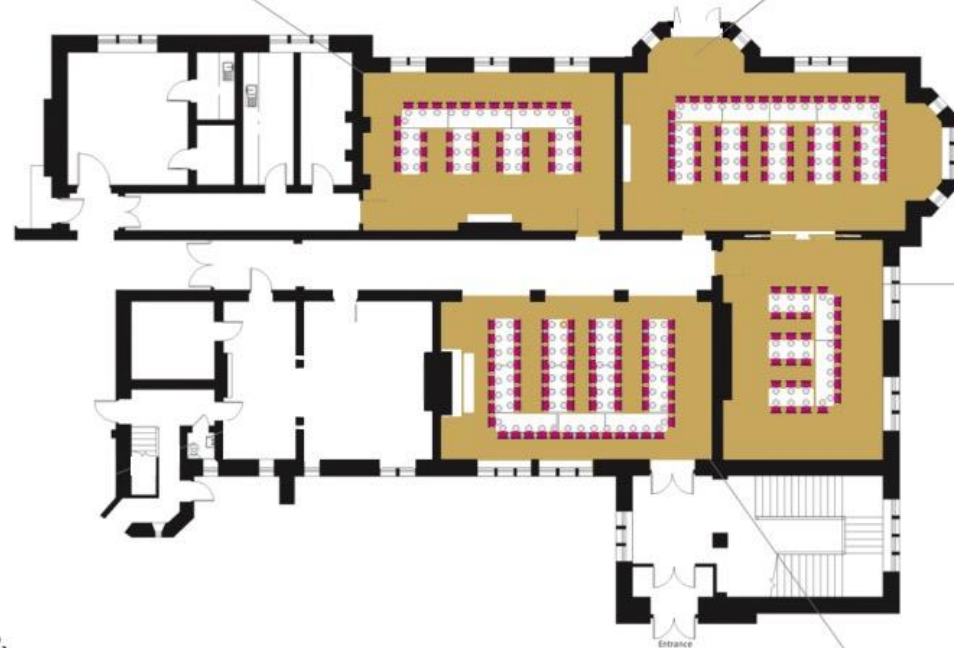
Library
8.49m x 5.72m
Max Seating: 36/42
6 of 6ft x 2ft 6"

Great Hall
10.32m x 6.02m
Max Seating: 76/86
7 of 6ft x 2ft 6"
4 of 8ft x 2ft 6"

Trestle Layout 'Feast'

Dining Room
9.68m x 6.05m
Max Seating: **34/38**
5 of 6ft x 2ft 6"
2 of 8ft x 2ft 6"

Drawing Room
12.15m x 7.47m
Max Seating: **55/59**
3 of 6ft x 2ft 6"
6 of 8ft x 2ft 6"



Library
8.49m x 5.72m
Max Seating: **27/29**
3 of 6ft x 2ft 6"
2 of 8ft x 2ft 6"

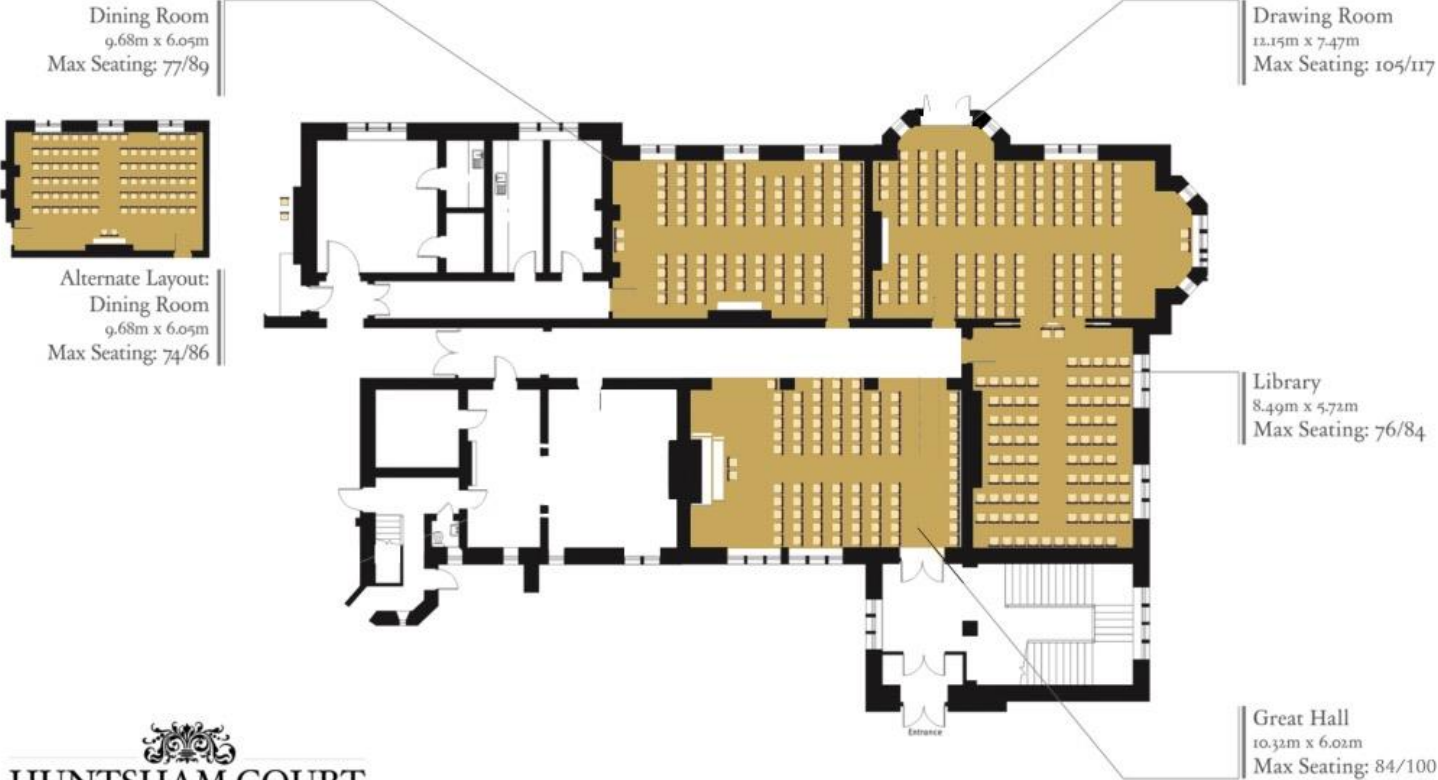
Great Hall
10.32m x 6.02m
Max Seating: **61/71**
9 of 6ft x 2ft 6"
2 of 8ft x 2ft 6"


HUNTSHAM COURT

First number (red) based on using our Conference chairs.
Second number (black) based on using Chivari limewash chairs.

Maximum guest capacity for events is 120. This shows maximum capacities, for guidance only, and we suggest allowing a little more space for comfort.

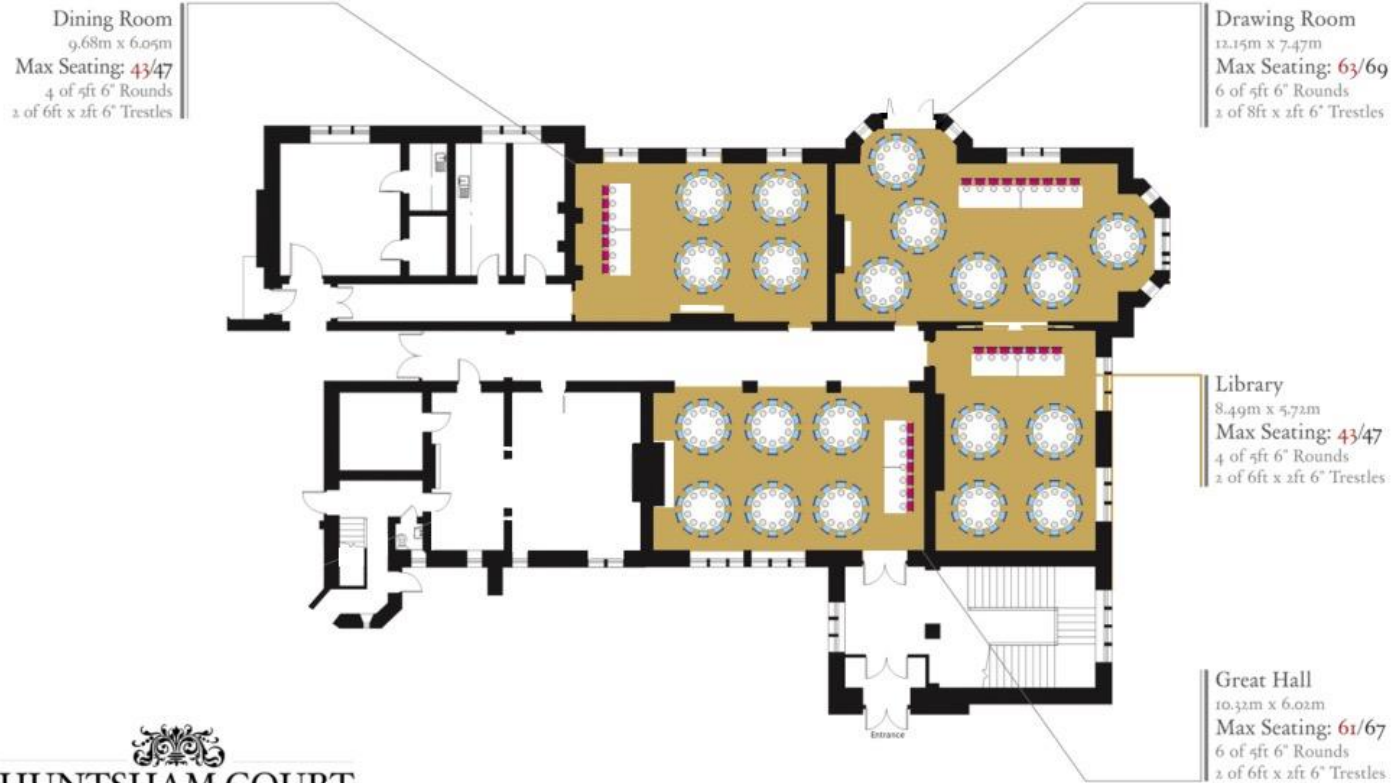
Theatre Style



First number (red) based on using our Conference chairs.
 Second number (black) based on using Chivari limewash chairs.

Maximum guest capacity for events is 120. This shows maximum capacities, for guidance only, and we suggest allowing a little more space for comfort.

Banquet Layout with Top Tables
 5ft 6" Round Tables & 6ft x 2ft 6" Trestle Tables



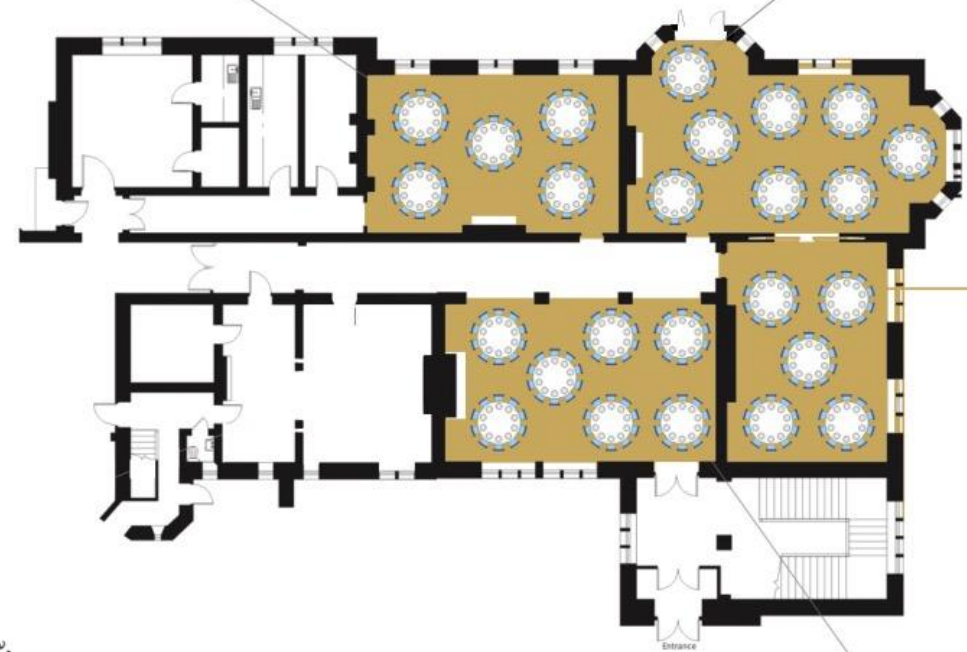
First number (red) based on using our Conference chairs.
 Second number (black) based on using Chivari limewash chairs.

Maximum guest capacity for events is 120. This shows maximum capacities, for guidance only, and we suggest allowing a little more space for comfort.

Banquet Layout 5ft 6" Round Tables

Dining Room
9.68m x 6.05m
Max Seating: **45/50**
6 of 5ft 6" Rounds

Drawing Room
12.15m x 7.47m
Max Seating: **72/80**
8 of 5ft 6" Rounds



Library
8.49m x 5.72m
Max Seating: **45/50**
5 of 5ft 6" Rounds

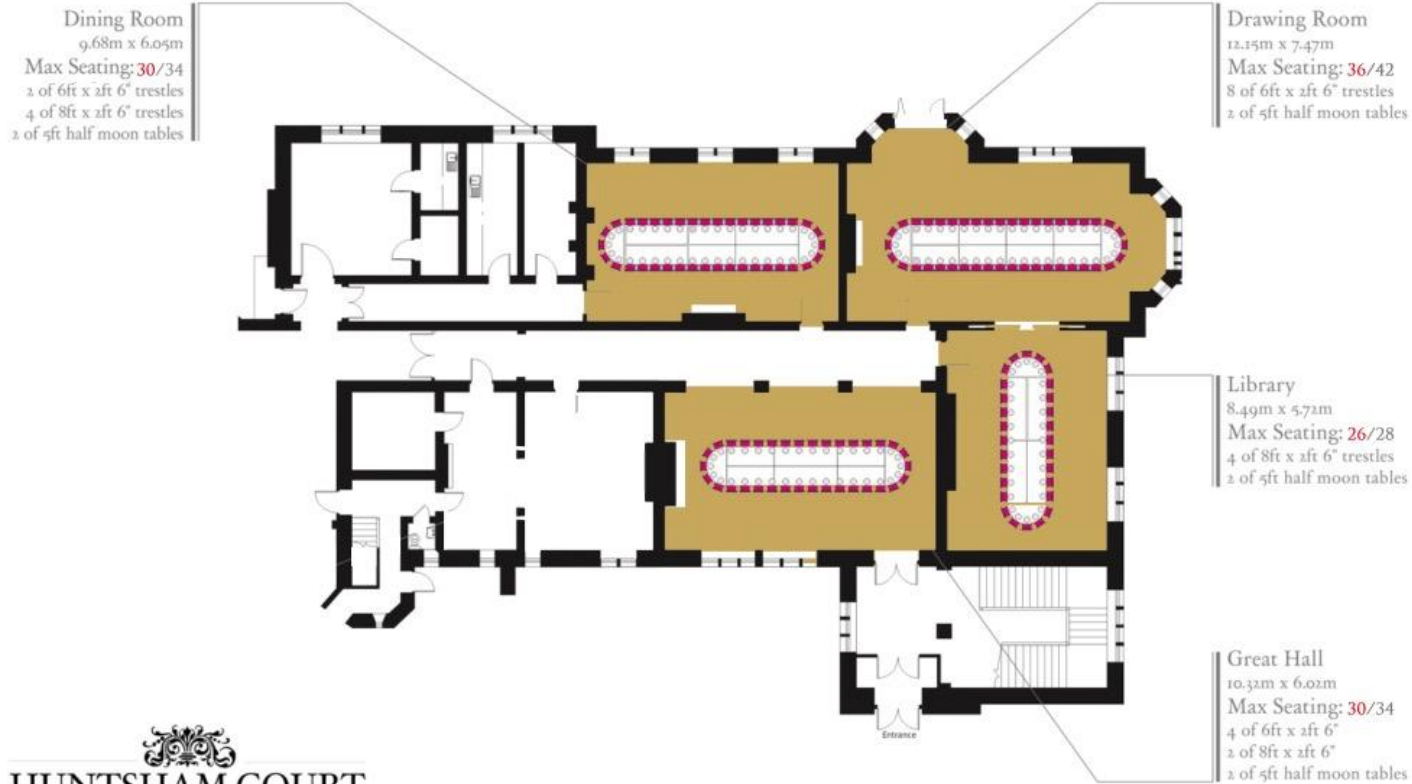
Great Hall
10.32m x 6.02m
Max Seating: **63/70**
7 of 5ft 6" Rounds



First number (red) based on using our Conference chairs.
Second number (black) based on using Chivari limewash chairs.

Maximum guest capacity for events is 120. This shows maximum capacities, for guidance only, and we suggest allowing a little more space for comfort.

Oval Tables

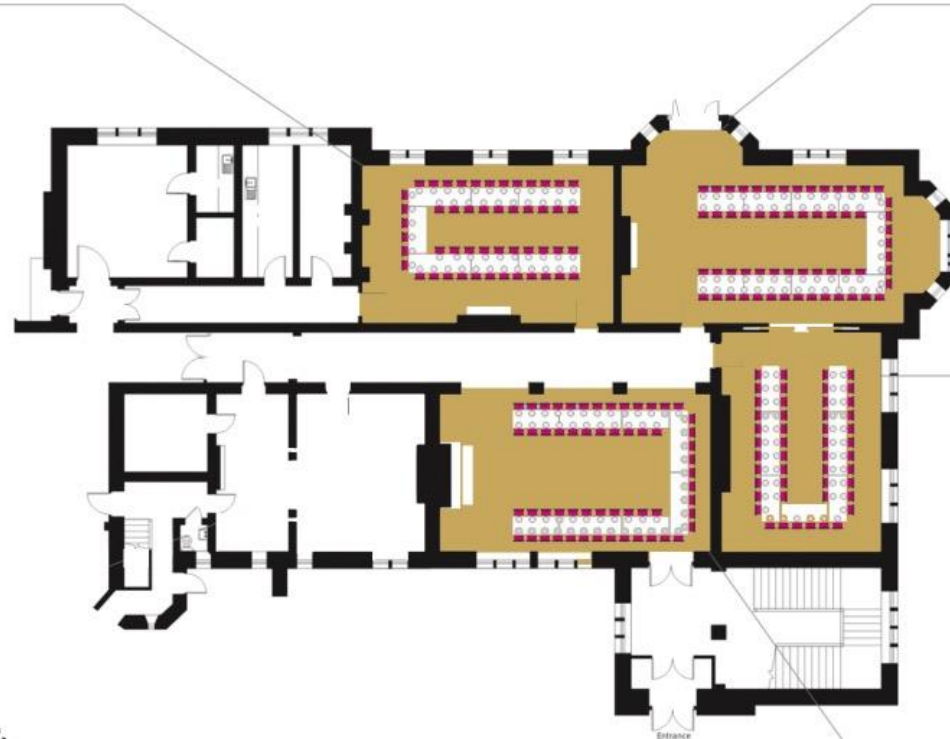


Second number (red) based on using our Conference chairs.
Third number (black) based on using Chivari limewash chairs.

Maximum guest capacity for events is 120. This shows maximum capacities, for guidance only, and we suggest allowing a little more space for comfort.

Conference Layout

Dining Room
9.68m x 6.05m
Max Seating: **45**/**50**
3 of 6ft x 2ft 6"
4 of 8ft x 2ft 6"



Drawing Room
12.15m x 7.47m
Max Seating: **50**/**59**
8 of 6ft x 2ft 6"
1 of 8ft x 2ft 6"

Library
8.49m x 5.72m
Max Seating: **41**/**48**
5 of 6ft x 2ft 6"
2 of 8ft x 2ft 6"

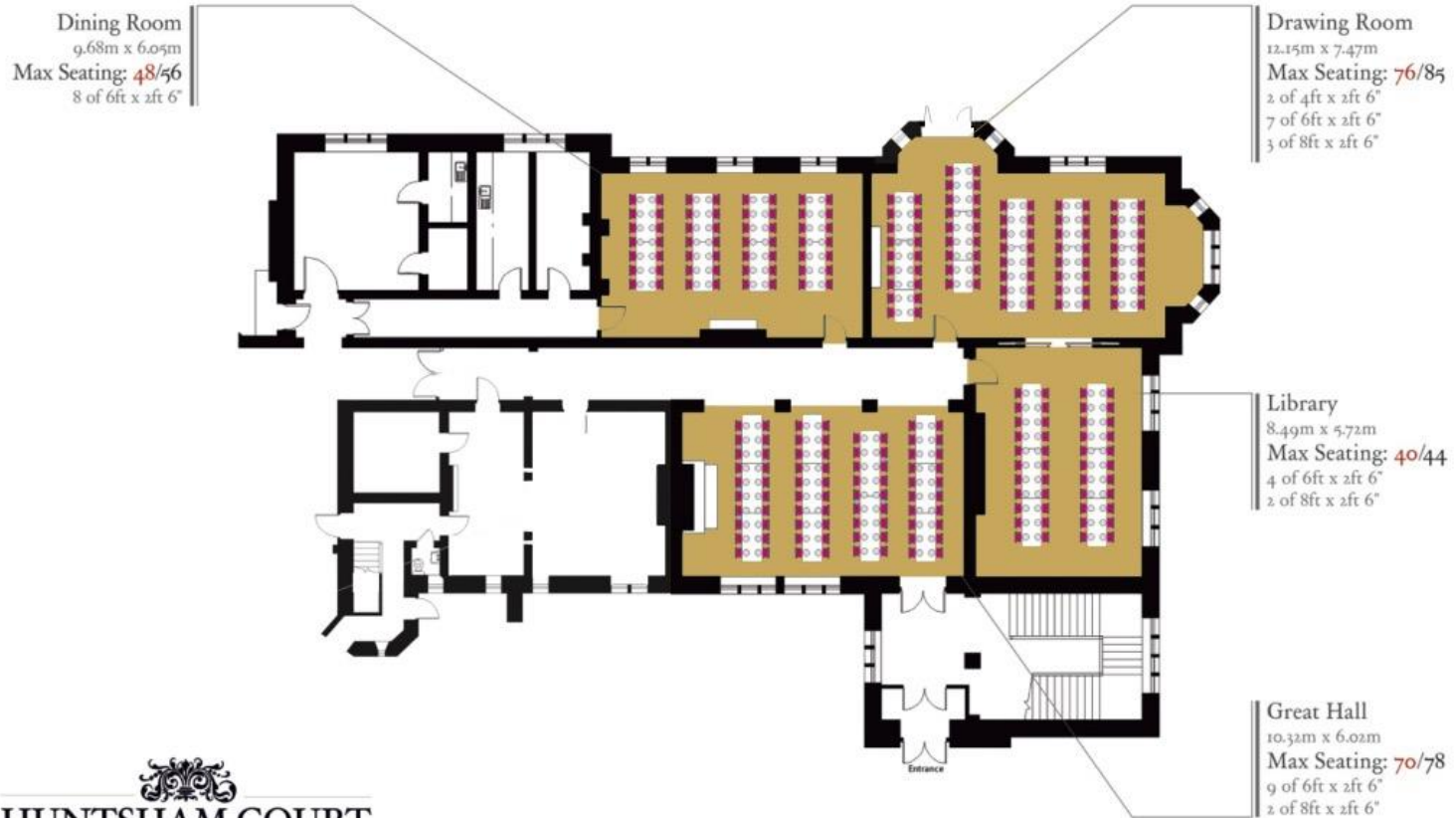
Great Hall
10.32m x 6.02m
Max Seating: **50**/**57**
4 of 6ft x 2ft 6"
4 of 8ft x 2ft 6"



First number (**red**) based on using our Conference chairs.
Second number (**black**) based on using Chivari limewash chairs.

Maximum guest capacity for events is 120. This shows maximum capacities, for guidance only, and we suggest allowing a little more space for comfort.

Trestle Layout Option 2




HUNTSHAM COURT

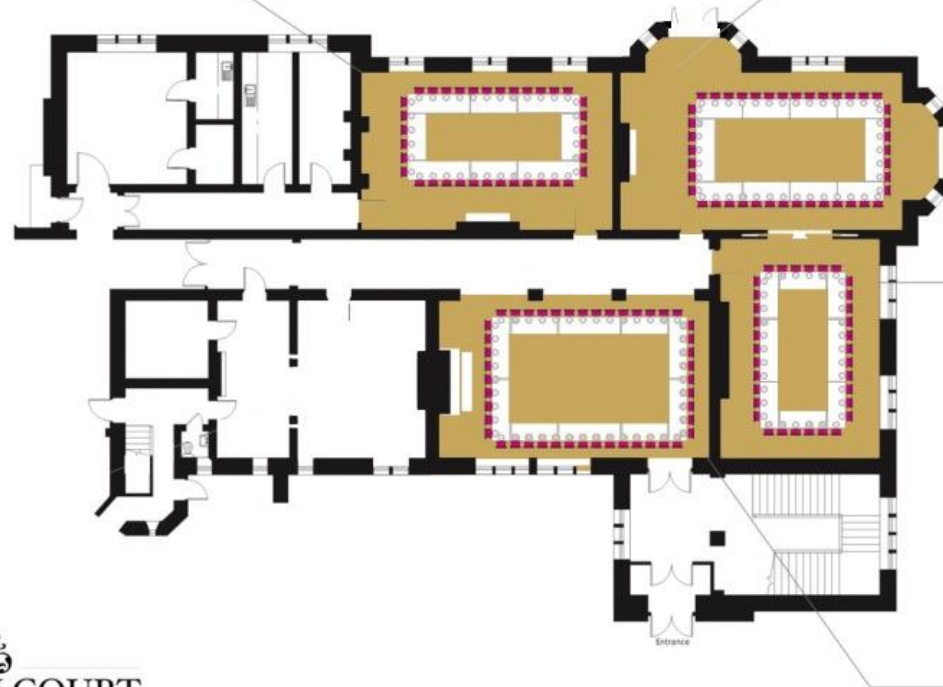
First number (red) based on using our Conference chairs.
Second number (black) based on using Chivari limewash chairs.

Maximum guest capacity for events is 120. This shows maximum capacities, for guidance only, and we suggest allowing a little more space for comfort.

Doughnut Layout

Dining Room
9.68m x 6.05m
Max Seating: **30**/~~36~~
4 of 6ft x 2ft 6"
4 of 8ft x 2ft 6"

Drawing Room
12.15m x 7.47m
Max Seating: **36**/~~42~~
8 of 6ft x 2ft 6"
2 of 8ft x 2ft 6"



Library
8.49m x 5.72m
Max Seating: **28**/~~34~~
6 of 6ft x 2ft 6"
2 of 8ft x 2ft 6"

Great Hall
10.32m x 6.02m
Max Seating: **38**/~~46~~
4 of 6ft x 2ft 6"
6 of 8ft x 2ft 6"


HUNTSHAM COURT

First number (red) based on using our Conference chairs.
Second number (black) based on using Chivari limewash chairs.

Maximum guest capacity for events is 120. This shows maximum capacities, for guidance only, and we suggest allowing a little more space for comfort.